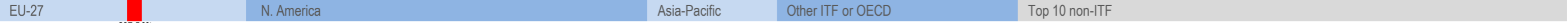
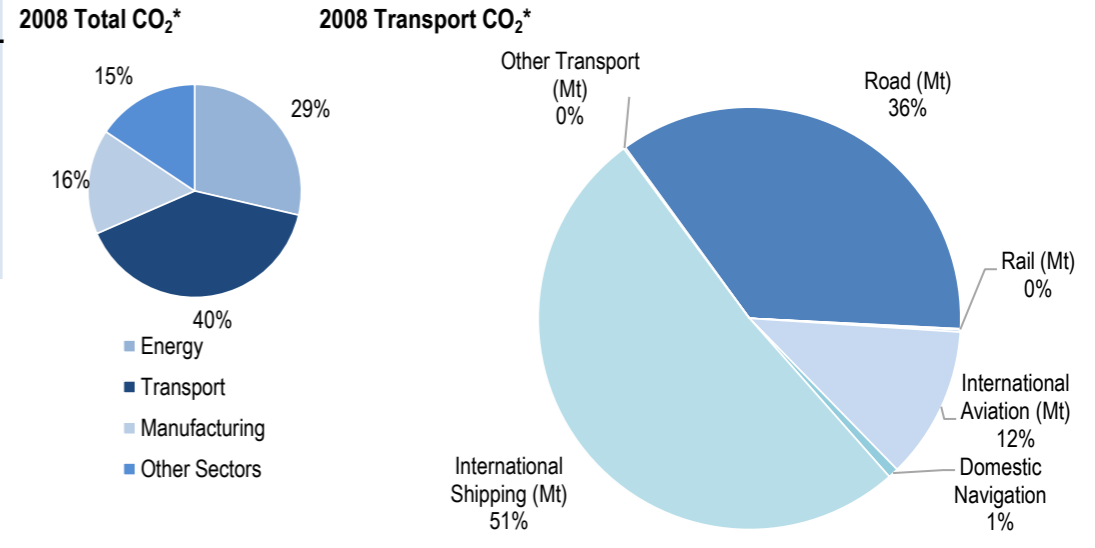
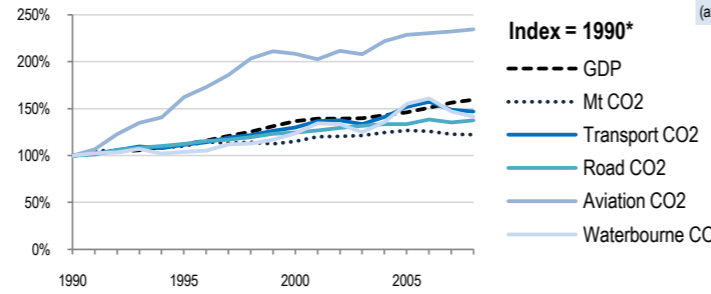
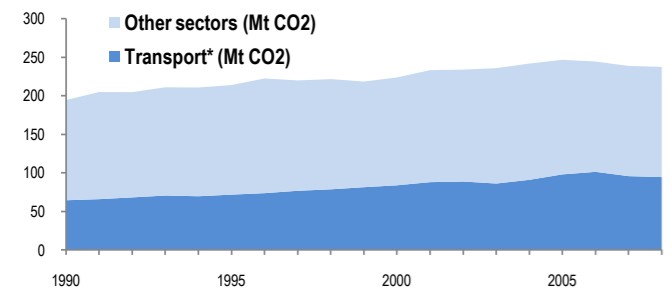


# Netherlands



Change 1990-2008*	Mt (axis set -50%,100%)	2008	T/capita	2008, Kg/\$2000 PPP	2008	2007-2008	(%Mt)
Total CO <sub>2</sub>	22%	237.46	11%	14.44	-23%	0.43	-0.5%
Transport CO <sub>2</sub>	47%	94.56	33%	5.75	-8%	0.17	-1.2%
Road CO <sub>2</sub>	37%	33.84	25%	2.06	-14%	0.06	1.5%
Aviation CO <sub>2</sub>	135%	11.17	113%	0.68	47%	0.02	1.1%
Waterbourne CO <sub>2</sub>	42%	49.33	29%	3.00	-11%	0.09	-3.5%



Transport and the Economy	1990	1995	2000	2001	2002	2003	2004	2005	2006	2007	2008	1990-2008	%/year**	% 2007-2008
Population (millions)	14.95	15.46	15.92	16.04	16.15	16.22	16.28	16.32	16.34	16.38	16.44	10%	0.53%	0.37%
GDP PPP (billion 2000 US dollars)	342.86	384.02	468.25	477.27	477.63	479.24	489.96	499.98	516.95	535.63	546.32	59%	2.62%	2.00%
Road passenger km (million pkm)	150400	145600	156553	157083	159627	161700	167549	164834	163630	164905	163236	9%	0.46%	-1.01%
Road and Rail freight tkm (million tkm)	25961	30103	36082	35324	34411	37162	40177	39868	39706	40083	41328	59%	2.62%	3.11%
Road pkm/capita	10060	9418	9834	9793	9884	9969	10292	10100	10014	10067	9929	-1%	-0.07%	-1.37%
Road and Rail freight tkm/\$ gdp	0.08	0.08	0.08	0.07	0.07	0.08	0.08	0.08	0.08	0.07	0.08	0%	-0.01%	1.09%
Passenger cars per 1000 inhabitants	368	361	383	..	424	..	429	..	..	441	..	..	1.07%	..

CO2 Emissions	1990	1995	2000	2001	2002	2003	2004	2005	2006	2007	2008	1990-2008	%/year**	% 2007-2008
IEA CO <sub>2</sub> from fuel combustion (Mt)*	194.43	213.91	223.72	233.24	233.92	235.81	241.78	246.64	244.39	238.73	237.46	22%	1.12%	-0.53%
... of which transport CO <sub>2</sub> (Mt)*	64.45	71.76	83.85	87.93	88.74	86.15	90.95	98.01	101.29	95.73	94.56	47%	2.15%	-1.22%
Transport* as a percentage of total	33.1%	33.5%	37.5%	37.7%	37.9%	36.5%	37.6%	39.7%	41.4%	40.1%	39.8%			
Road (Mt)	24.64	27.69	30.71	31.21	31.88	32.45	32.86	32.94	34.06	33.33	33.84	37%	1.78%	1.53%
Rail (Mt)	0.12	0.13	0.13	0.13	0.13	0.12	0.14	0.1	0.09	0.09	0.09	-25%	-1.59%	0.00%
Domestic Aviation (Mt)	0.47	0.33	0.27	0.19	0.21	0.19	0.18	0.22	0.16	0.18	0.15	-68%	-6.15%	-16.67%
International Aviation (Mt)	4.29	7.38	9.65	9.45	9.86	9.7	10.38	10.67	10.81	10.87	11.02	157%	5.38%	1.38%
Domestic Navigation (Mt)	0.53	0.52	1	0.97	0.92	0.86	0.87	0.63	0.82	0.73	0.75	42%	1.95%	2.74%
International Shipping (Mt)	34.29	35.59	41.98	45.88	45.62	42.72	46.39	53.31	55.26	50.40	48.58	42%	1.95%	-3.61%
Other Transport (Mt)	0.1	0.11	0.1	0.11	0.12	0.11	0.12	0.15	0.1	0.12	0.13	30%	1.47%	8.33%

GHG Emissions	1990	1995	2000	2001	2002	2003	2004	2005	2006	2007	2008	1990-2008	%/year**	% 2007-2008
UNFCCC GHG emissions (Mt CO <sub>2</sub> eq.)*	251.02	267.66	267.16	272.68	272.15	270.13	275.97	277.58	276.08	269.38	267.14	6%	0.35%	-0.83%
UNFCCC GHG fuel combustion (Mt CO <sub>2</sub> eq.)*	190.20	206.25	215.78	225.99	225.51	226.07	231.79	234.09	233.04	227.89	230.12	21%	1.06%	0.98%
... of which transport GHG (Mt CO <sub>2</sub> eq.)*	65.45	72.87	85.54	90.15	90.73	88.10	92.93	100.39	103.45	98.18	96.21	47%	2.16%	-2.00%
Road (Mt)	25.90	29.19	32.19	32.70	33.38	33.95	34.35	34.40	35.30	34.94	35.21	36%	1.72%	0.77%
International Aviation (Mt)	4.56	7.61	9.78	9.57	10.02	9.85	10.53	10.91	11.01	11.14	11.18	145%	5.11%	0.35%
International Shipping (Mt)	34.46	35.50	42.81	47.13	46.56	43.43	47.23	54.30	56.39	51.33	49.05	42%	1.98%	-4.44%

\* includes emissions from international aviation and international maritime bunkers - there is no internationally agreed allocation mechanism for these and totals here are indicative of the scale of these emissions, not of their national "ownership" \*\* available yrs.